

KCPARKS

2014 YEAR IN REVIEW



DEAR FRIENDS OF PARKS AND RECREATION,

2014 was a year of celebration and achievement for both our city and Kansas City Parks and Recreation.

A significant commemoration kicked-off in 2014 as the National World War I Museum at Liberty Memorial began its Centennial observation of the Great War. Commemorative centenary-related programs, exhibitions and events will take place at the museum through 2019.

Fountain Day in April is unofficially the start of spring in Kansas City. The 2014 event was held at the Eagle Scout Fountain to observe the first major donation to the City of Fountain's Wish Upon a Fountain campaign. The Martha Jane Phillips Starr Donor Advised Fund provided the capital for restoration of the landmark fountain that is dedicated to the values and achievements of the nation's Eagle Scouts.

A party for the opening of a new surf simulator at The Bay Water Park commenced our summer season of celebration which continued with events all over the city showcasing roses, trails, veterans, playgrounds, trains, food, dogs, and much more.

In July, we recognized National Parks and Recreation Month with the inaugural Big Picnic in This Park. We also marked the opening of the Chouteau Parkway expansion that provides a scenic and green connection from the Northland to the Missouri River.

Swope Soccer Village was the focus in September as the world-class urban soccer complex officially opened in our largest park. More than 50,000 were able to enjoy the facility in 2014.

The biggest celebration happened in October when Kansas City hosted the World Series for the first time in 29 years. Our enthusiasm was evident--with blue fountains flowing and Royals flags flying--as the entire city rallied around our boys in blue. We are proud of the Royals and thrilled to be the home of the 2014 American League Champions.

Other triumphs occurred in the fall as Kansas City Parks and Recreation earned national accreditation through the Commission for Accreditation of Park and Recreation Agencies and the National Recreation and Park Association. I am pleased to say that KC Parks received our initial accreditation in 1999 and have continuously maintained status as an accredited agency--currently one of only 140 in the nation.

In November, we recognized the 20th anniversary of the Shoal Creek TIF and resulting infrastructure improvements that have provided access and stimulated residential, commercial and recreational use in the Northland. We were also pleasantly surprised when an Eastern Cottonwood in Kessler Park was designated as a Missouri State Champion and the largest known tree in the state.

*Director
McHenry on
the Sister
Cities bridge*



Of course, additional festivities occurred all year long. You can read more about these and all of KC Parks 2014 events, projects and awards in this Year in Review.

I would like to officially welcome Commissioner Amber Hackett to the Board of Parks and Recreation. Ms. Hackett was appointed by the Mayor upon the resignation of McClain Bryant in October and promptly hit the ground running. She, along with four additional volunteer Commissioners, provides strong leadership and sage governance to our department.

Yes, 2014 was definitely a year of celebration and one that will not soon be forgotten. I appreciate your support and look forward to seeing what 2015 has in store for Kansas City, Missouri.

SINCERELY,
MARK L. MCHENRY, DIRECTOR

OUR MISSION

To improve the quality of life, health and wellness of our community by providing socially equitable, community-driven programming and environmentally sound natural resource management.



BOARD OF PARKS AND RECREATION

Commissioners *(Pictured left to right)*

Allen Dillingham

Mary Jane Judy

Jean Paul Chaurand, President

Amber Hackett (installed October 21, 2014)

David Mecklenburg

McClain Bryant (through October 21, 2014)
(Not pictured)

CITY COUNCIL

Mayor

Sylvester "Sly" James

First District

Scott Wagner, Dick Davis

Second District

Ed Ford, Russ Johnson

Third District

Melba Curls, Jermaine Reed

Fourth District

Jim Glover, Jan Marcason

Fifth District

Cindy Circo, Michael Brooks

Sixth District

Scott Taylor, John A. Sharp





Dignitaries scoop blue water from J.C. Nichols Fountain.

#BLUEFOUNTAINS

In late September, several Kansas City fountains were dyed blue to support the Kansas City Royals in their post season play. At the time, no one had any idea our “boys in blue” would go all the way to the World Series and then all the way to Game 7. Blue fountain fever flourished as additional fountains were dyed throughout the course of the Royals quest to “Take the Crown” eventually reaching capacity with all eight dyeable fountains running blue in time for the World Series. Blue fountains included the Concourse Fountain; Northland Fountain; Spirit of Freedom Fountain; Women’s Leadership Fountain; Children’s Fountain; Westside Fountain; J.C. Nichols Memorial Fountain; and the Sea Horse Fountain at Meyer Circle. Touring the fountains-- taking selfies and group photos--became a fun family activity during the month of October.

Royals enthusiasm and City pride were so high that KC Parks and the City of Fountains Foundation decided to bottle the blue fountain water to commemorate the Royals run and raise funds for the Wish Upon a Fountain campaign. Sales were brisk when the limited edition #KCTrueBlue bottles hit the shelves ultimately raising \$1,500 for fountain repair.



COMPLETED PROJECTS

CONSTRUCTION PROJECTS

- The Bay Water Park BayRider Surf Simulator
- Blue Valley Park Restrooms Renovation at Main Shelter
- Brookside Park Sand Volleyball Court
- Chouteau Parkway HWY 210 to HWY I-35 reconstruction
- Cleaver II Blvd Roadway and Streetscape Improvements
- Hidden Valley Park Trail, Lights, 9-Hole Disc Golf, Rain Garden, and Shelter
- Minor Park Tennis Court Common Area and Shelters
- Penn Valley Park Road and Lake Improvements
- Prospect Park New Basketball Court
- Roanoke Park Pedestrian and Accent Lighting
- Roanoke Park Sand Volleyball Court
- Seven Oaks Park-Sprayground installation and painting of existing shelter
- Shoal Creek Parkway N. Harrison to N. Woodland
- Spring Valley Park-Baseball field fencing for outfield and foul lines
- Spring Valley Park-Sprayground installation and new shelter
- Swope Park Soccer Village-Fields, concession stands, road asphalt overlay, sidewalks and traffic signal
- Tiffany Hills Park Shelter south of the ball fields
- Tiffany Hills Park Storage Shed north of the ball fields
- Tower Park Water Tower exterior restoration and painting (Phase1)
- Van Brunt Park-Portable restroom enclosure adjacent to playground
- Waggin' Trail Off-Leash Dog Park - Joint project with North Kansas City, MO
- Waterwell Park Re-lamp of Sports Light on Field



LAND ACQUISITION

- Wheeling LLC Property adjacent to Frank Vaydik Line Creek Park 19.32 Acres

TRAILS

- Anne Garney Park – 2 miles
- Blue River Trail – 1.7 miles
- Highland Park – .7 miles
- Hodge Park – 1.8 miles/2.5 miles mountain bike
- Little Blue Valley Park – 2 miles
- Line Creek Trail – 1.7 miles
- Loose Park Jogging Trail Repair and Resurfacing

PARKING LOTS

- Hidden Valley Park – New
- Hillcrest Community Center – Overlay
- Hodge Park – Overlay
- Marlborough Community Center – Expansion
- Marlborough Park – New
- Swope Park Soccer Village – New

STONE WALL REPAIRS

- Swope Park Masonry Repairs
- Union Cemetery Wall Repairs

NEW PLAYGROUNDS

- Blue Hills Park
- Chouteau Greenway Park
- Clayton Park
- Concourse Park
- Crestview Park
- Davidson Park
- Englewood Park
- Hibbs Park
- Hidden Valley Park
- Roanoke Park South Meadow
- Ruskin Way Park
- Sunnyside Park
- Swope Park Shelter #5
- The Parade Park

MASTER PLANS

Blue River Trail Alignment Study / Swope Park Area (87th and Blue River Rd to 63rd St.)
Chouteau Greenway Park
Davidson Park
Dunbar Park
Englewood Park Trail Plan
Maple Park
Migliazzo Park
Oak Park
Washington Square Park Concept Plan
Waterworks Park Trail and Shelter Plan
Swope Park Greenhouse Work Plan

MONUMENTS & FOUNTAINS

Adam & Eve Sculpture Repairs
American War Mothers Fountain Repairs
Eagle Scout Fountain Restoration
Karen Slack Memorial Restoration
LeGrand Noeud Sculpture Conservation
Pioneer Mother Memorial Conservation
Swope Memorial Fountain Conservation

FACILITY MAINTENANCE & REPAIRS

Arbor Villa Park Tennis Court Resurface
Garrison Community Center Tornado Safe Room
Gregg Klice Community Center Building Addition and Locker Room Improvements
Indian Creek and Blue River Trail Fence Improvements
Kansas City Zoo Animal Hospital HVAC
Loose Park Rose Garden Stone Columns and Wood Trellis Improvement

SIGNAGE

Daniel Morgan Boone Park Wayfinding Signage
Red Bridge Text Panels
Swope Park Signage, Phase 2

OTHER PROJECTS

Clark Ketterman Park Pedestrian Sidewalk Improvements
Concourse Park Security Lighting
Gage Park Stairs Connecting Upper and Lower Park
Line Creek Center Pool Repairs
Oak Park New Basketball Court Improvements
Penguin Park- Fiberglass repairs to the existing animal figurines
Sunnyside Park Bench Installations
Lexington Rd Sidewalk Wabash to Montgall





A flying horse at J.C. Nichols Fountain.



J.C. NICHOLS FOUNTAIN RENOVATION

If you witnessed horses flying in 2014, your eyes were not deceiving you! The J.C. Nichols Memorial Fountain began extensive renovation in early December with the removal of the four horsemen and smaller dolphin statues. Over the winter, the sculptures will be conserved and the fountain interior and coping stones will be cleaned and repaired. The project also includes the reinstallation of the recently acquired original Fourth Dolphin sculpture. The Replacement Dolphin, which has been a part of the fountain for more than 50 years, will be placed on a separate display in Mill Creek Park.

The renovations are made possible by generous contributions to the City of Fountains Foundation's Wish Upon a Fountain campaign and from the following: Miller Nichols Charitable Foundation; Water's Edge Aquatic Design; JE Dunn Construction; and Grundfos Pumps Corporation.

The project will be completed in time for the J.C. Nichols Fountain to host Fountain Day festivities on April 14, 2015.



2014 EVENTS

Weekends

Car Free Weekends on Cliff Drive

February 8

Breakfast with the Beasts at Lakeside Nature Center



February 14-15
Lock Your Love: Valentine's Day on the Old Red Bridge

March 9

Hall of Fame Induction at Bruce R. Watkins Cultural Heritage Center

March 15

Brookside St. Pat's Warm-Up Parade

March 17

St. Patrick's Day Parade on Broadway

March 28-30

Greater Kansas City Home Show and Flower, Lawn & Garden Show

April 5

Project Blue River Rescue in Swope Park



April 8
Fountain Day at Eagle Scout Memorial Fountain

April 9

Sporting KC Ability Sport Camp in Swope Park

April 12

Rock the Parkway Half Marathon and 5K on Ward Parkway

Arbor Day Tree Planting in Loose Park

April 19

Earth Day at Lakeside Nature Center

April 21

Turning the TIGER Green: Troost Pedestrian Bridge over Brush Creek Opening



April 22
Show-Me State Games Torch Run in Mill Creek Park

May-October

KC Organics and Natural Market in Minor Park Open for Season (Saturdays)

May 3

Celebrating Urban Birds at Lakeside Nature Center

May 7-10

Penn Valley Park Plein Air Fest

May 10

National Train Day Celebration at Kansas City Northern Railroad

May 13

Brookside Park Sand Volleyball Court Opening

May 16

Longview Road Improvements Dedication at The Bay Water Park

May 17

Confederate Spring Muster at Shoal Creek Living History Museum

Summer Dusk 2014 Concert at the Colonnade in Kessler Park

May 21

KC Parks Employee Departmental Service Awards Breakfast

May 22-23

BayRider Opening Events at The Bay Water Park

May 22, 29 and June 5, 12 & 19

Thimble Thursday Concerts in Garment Park

May 23

Orange Fountain for National Orange Popsicle Week at J.C. Nichols Fountain

May 23-August 9

Mayor's Nights/Club KC Events

May 24-25

Jiggle Jam Festival at Crown Center and Grand Boulevard

May 24-September 1

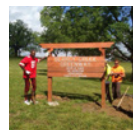
Major Pools & Spraygrounds Open for Season

May 25

Kansas City Symphony's Celebration at the Station

May 26

Memorial Day Observances at National World War I Museum at Liberty Memorial and Union Cemetery



May 31
Searcy Creek Greenway Playground Build with the Dwayne Bowe Foundation

June 1

Rose Show & Rose Day at Laura Conyers Smith Rose Garden in Loose Park

Annual Celebration of Life in Bloch Cancer Survivors Park

June 6

Jazzoo at the Kansas City Zoo

June 2-August 8

Summer Enrichment Camps at KC Parks Community Centers

June 6, 13, 20 & 27

Children's Film Festival in Hyde Park



June 7
National Trails Day: Line Creek and Route 152 Trails Dedication

Bugs Extravaganza at Lakeside Nature Center

1st Saturday at Shoal Creek Living History Museum

June 9-August 3

Junior Pools Open for Season

June 14

Flag Day Celebration at Missouri Korean War Veterans Memorial in Washington Square Park

Dragon Boat Festival & Races on Brush Creek

Urban American Outdoors Kids Fishing Derby at Spring Valley Lake



June 15
Ride the Fountains Bicycle Tour

June 17-July 6

Heart of America Shakespeare Festival in Southmoreland Park

June 19-22

KC Wide Open Professional Disc Golf Championships

June 21

Playground Celebration in Roanoke Park

Summer Dusk 2014 Concert at the Colonnade in Kessler Park

June 22-28

Taps at the Towner at the National World War I Museum at Liberty Memorial



June 28
Garrison Community Center's 100th Anniversary Celebration

July 1-31

National Parks and Recreation Month

July 5

1st Saturday at Shoal Creek Living History Museum

July 9, 16, 23 & 30

Storytime in the Park at Various Locations



July 12
Chouteau Parkway Dedication

Annual Northland Hot to Trot 5K and 1-Mile Family Fun Run at Chouteau Greenway Park

July 17-27

KC Fringe Festival at Just Off Broadway Theatre

July 19

Summer Dusk 2014 Concert at the Colonnade in Kessler Park

July 20

Kansas City's Big Picnic and Quick Paint in Theis Park

July 25

Summer Concert Series at the Kansas City Museum at Corinthian Hall

July 26

Kids, Water, Bugs, Fish at Lakeside Nature Center

August 2

1st Saturday at Shoal Creek Living History Museum

August 9

Family Art Day in Swope Park and the KC Zoo



August 15
Birdhouse on the Road Summer Tour at Penn Valley Skatepark

August 15-17

Ethnic Enrichment Festival in Swope Park



August 16
Orange Ribbons on Emanuel Cleaver II Boulevard Ribbon Cutting

Sly's Rock the Block at Union Station

What's Out at Night? at Lakeside Nature Center

Summer Dusk 2014 Concert at the Colonnade in Kessler Park

August 20

I-29 and Tiffany Springs Interchange Opening

Grand Opening of Waggin' Trail Off Leash Dog Park in North Kansas City

2014 EVENTS (Continued)

August 29

Charlie Parker Celebration at Bruce R. Watkins Cultural Heritage Center

Summer Concert Series at the Kansas City Museum at Corinthian Hall

August 30

City Manager's Employee Appreciation Picnic at The Bay Water Park

September 5

Red Fountains for Kansas City Chiefs Red Friday

Wish Upon a Fountain Art Exhibit



September 6

Dippin' Dogs Swim Party at The Bay Water Park

Dance in the Park in Roanoke Park

1st Saturday at Shoal Creek Living History Museum

September 7

Dippin' Dogs Swim Party at The Springs Aquatics Center

Jazz in the Roses at Loose Park Rose Garden

September 12

Swope Soccer Village Dedication

September 12-14

Brush Creek ArtWalk

September 19

Summer Concert Series at the Kansas City Museum at Corinthian Hall

September 19-20

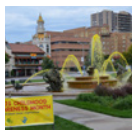
Minor Park Open Tennis Tournament

Wonders of Outdoor Wildlife at Camp Lake of the Woods

September 20

Truck-A-Palooza at The Parade

Garden Faire at Loose Park



September 24-25

Gold Fountain for Childhood Cancer Awareness at J.C. Nichols Fountain

September 25

Wine & Roses Garden Party in Loose Park Rose Garden

September 26-October 24

Brush Creek ArtWalk Exhibit at Bruce R. Watkins Cultural Heritage Center

September 27-October 29

Blue Fountains for the Royals World Series Run at Multiple Fountains

September 27

Revolving Green Around the Blue on Indian Creek Trail

October 3

Kansas City's Big Picnic Quick Paint First Friday Art Exhibit

October 5

KC Zoo Run/Walk: Run for the Penguins

October 10-11

WaterFire KC Festival of the Arts on Brush Creek

Magic Woods at Lakeside Nature Center

October 11

18th & Vine Jazz & Blues Festival

Harvest Festival 2014 at Shoal Creek Living History Museum

October 12

Volksmarch on the Line Creek Trail



October 18

KABOOM! Playground Build in Concourse Park

Halloween Events at Shoal Creek Living History Museum



October 23-26

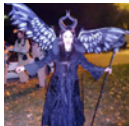
Battle of Westport 150 Commemorative Events in Loose Park and Swope Park

October 25

Davidson Park Playground Dedication

October 28

Scary Skate at Line Creek Ice Arena



October 31

SCARE-IT at the Kansas City Museum at Corinthian Hall

November 1

The Wilderness Run at Shoal Creek Living History Museum

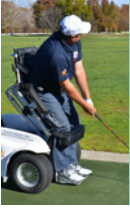
November 2

The Cliffhanger Run on Cliff Drive in Kessler Park



November 3

Celebrating 20 Years of the Shoal Creek TIF at Shoal Creek Golf Course



November 5

Paramobile Dedication with Stand Up and Play Foundation at Heart of America Golf Course

Parking Lot and Picnic Shelter Dedication at Marlborough Community Center

November 5, 7 & 9

Big 12 Women's Soccer Championship Tournament at Swope Soccer Village

November 6

Missouri State Champion Tree Designation in Kessler Park

November 11

Veterans Day Observances at National World War I Museum at Liberty Memorial & Vietnam Veterans Memorial

November 15

Kansas City Classic Wheelchair Basketball Tournament at Gregg/Klice Community Center

November 22

Turkey Bowling at Line Creek Ice Arena

December 4

Neighborhood Holiday Open House at the Kansas City Museum at Corinthian Hall

December 5-20

Mayor's Holiday Parties at Community Centers

December 5-6

NCAA Division III Men's & Women's Soccer Championship Tournament at Swope Soccer Village

December 6

A Visit from St. Nicholas at Shoal Creek Living History Museum
HOLIDAZZLE at Bruce R. Watkins Cultural Heritage Center



December 6-7, 13-14 & 20-21
The Fairy Princess at the Kansas City Museum at Corinthian Hall

December 10

Holiday Concert at the Kansas City Museum at Corinthian Hall

December 12

Santa's Wonderland in Gillham Park

December 13

Santa's Wonderland in Penguin Park

Tis the Season Gala at Bruce R. Watkins Cultural Heritage Center

December 14

Santa's Wonderland at Longview Tract

December 17

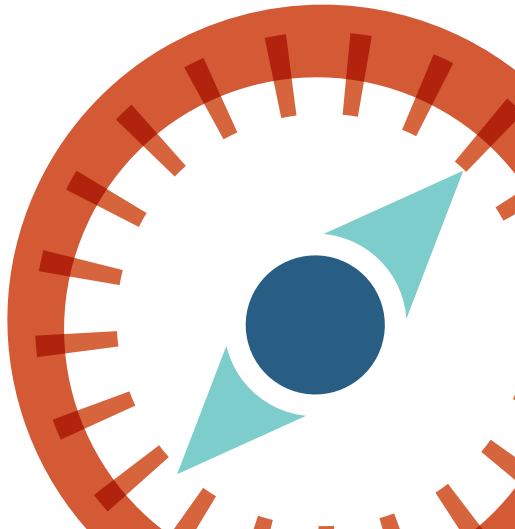
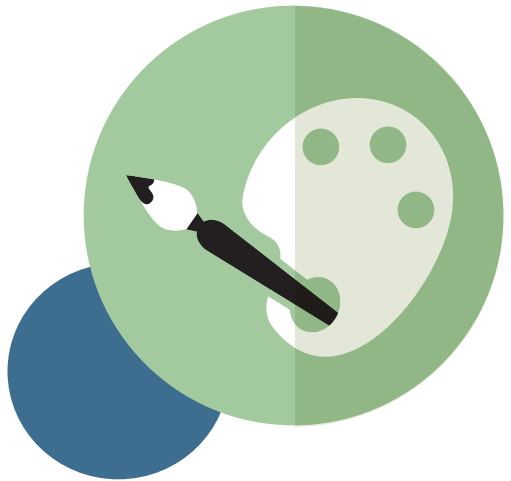
KC Parks Employee Breakfast & City Service Awards



December 20

Santa's Wonderland in Swope Park

Skate with Santa at Line Creek Ice Arena







KANSAS CITY'S BIG PICNIC

On July 20, KC Parks partnered with the Nelson Atkins Museum of Art to present the biggest picnic the region had ever seen! Kansas City's Big Picnic was a dual celebration observing National Parks and Recreation Month and the 25th Anniversary of Donald J. Hall Sculpture Garden.

The museum's lawn and Theis Park were linked to become one space for more than 3,000 Kansas Citians to come together for an evening of fun. A giant checkerboard-patterned art installation, *The Picnic Project* by Alison Heryer, was displayed throughout the grounds and set the scene for the festivities.

Attendees were able to bring their own picnic or purchase snacks and enjoy -- to a backdrop of acoustic musical performances -- children's art activities, StoneLion Puppet shows, badminton games and much more! As if two celebrations weren't enough, in honor of National Ice Cream Day, Blue Bell Ice Cream was also in attendance to hand out free scoops.

A highlight of the event, was the Big Picnic Quick Paint contest which provided artists the chance to complete a painting on-site to win a cash prize. Twenty artists painted "en plein air" and captured the spirit of the Big Picnic while onlookers watched their creations come to life. An oil on canvas painting by local artist Patrick Saunders, appropriately titled *The Big Picnic*, was the purchase award winner.

*QuickPaint
contest
winner.*



THE YEAR IN NUMBERS

COMMUNITY SERVICES

CUSTOMER PARTICIPATION

Community Centers	476,637
Pools/Spraygrounds	151,625
Athletic Facilities and Programs	677,381

YOUTH PARTICIPATION

All Facilities and Programs	765,073
Mayor's Nights Programs	17,707

** there is some crossover of numbers between categories*

ATTENDANCE

Golf Courses	138,530
Lakeside Nature Center	35,434
Loose Park Garden Center	20,432
Kansas City Zoo	886,220
Kansas City Northern Railroad	57,870
National WWI Museum	170,933
Shoal Creek Living History Museum	13,727
Starlight Theatre	303,803
Bruce R. Watkins Cultural Heritage Center	13,620

SHELTER HOUSES

Reservations	1,067
Attendance	22,483

VOLUNTEERS

Number Of Volunteers	4,790
Volunteer Hours	55,216
Estimated Value Of Volunteers	\$1,168,922

TOTAL PARTICIPATION **4,513,344**

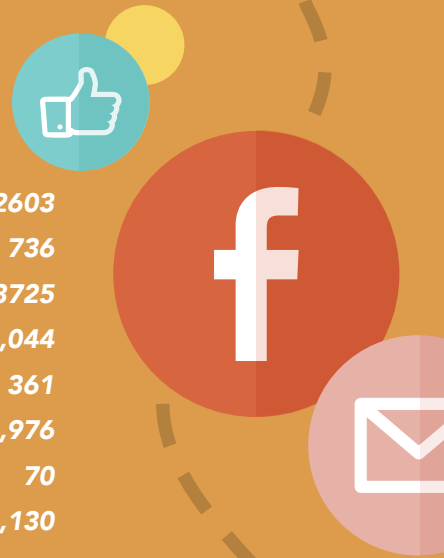
NATURAL RESOURCES

Trees Trimmed	7,738
Trees Removed	2,578
Stumps Removed	1,022
Total Acreage Mowed	67,259
Cubic Yards Of Snow Removed	3,105,000
Graffiti Incidents Removed	409
Citizen 311 Action Center (Requests Resolved)	5,986
Land Acquisition In Acres	108 Acres



MARKETING AND EVENTS

Twitter Fans	2603
Instagram Fans	736
Facebook Fans	3725
Enewsletter Distribution List	10,044
Number Of Park Events	361
Special Event Attendance	600,976
Permitted Road Races	70
Road Race Participation	131,130



MAINTENANCE HOURS WORKED

Athletic Field	4,052
Landscape	31,329
Park Facility Repairs	16,422
Special Event Preparation	2,669
Litter/trash Removal	34,688







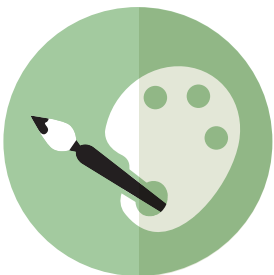
PLEIN AIR ART EVENTS

The Big Picnic Quick Paint is just one of several outdoor painting events supported by KC Parks that benefit local artists and organizations and truly make art a spectator sport.

The inaugural Penn Valley Park Plein Air Fest took place in May as artists from across the country gathered for a four-day paint-off to capture the natural beauty of the park located in the heart of Kansas City. The event concluded with a gala reception and auction as a benefit for the Penn Valley Park Conservancy.

Area artists spent the summer months painting Kansas City's flowing treasures to help raise funds for the City of Fountains Foundation's Wish Upon a Fountain campaign. The completed fountain artwork was on display during the month of September at the Buttonwood Art Space and available for purchase via online auction. The Save the Fountains Art Exhibit and Auction raised \$6,000 for nine aging iconic fountains in immediate and critical need of repair.

September marked the third year for the Brush Creek Art Walk which began in 2012 as an event to showcase the newly constructed walkways along Brush Creek. Seventy plein-air artists were given three days to complete paintings on-site along the banks of the creek. The juried artwork was displayed in the gallery of the Bruce R. Watkins Cultural Heritage Center during the month of October. Proceeds will be used to plant trees along the Brush Creek Trails.



2014 AWARDS & RECOGNITION

American Academy for Parks and Recreation Administration

Board of Directors: Mark L. McHenry, Director

American Advertising Federation-Kansas City Chapter

Silver Addy Award: #KCParks Integrated Marketing Campaign

American Society of Landscape Architects-Prairie Gateway Chapter

Merit Award: Penn Valley Park

Commission for Accreditation of Park and Recreation Agencies (CAPRA)

Reaccreditation (2014-2019): City of Kansas City, Missouri Parks and Recreation

City of Kansas City, Missouri

Rich Noll Pacesetter Award: Kevin Evans, District 1 Area Superintendent

Dispatch-Tribune Newspapers: Best of the Northland

Gold: Shoal Creek Golf Course

Dragon Boat Festival & Races

Business Division, 2nd Place: KC Parks Blazing Paddles

Economic Development Corporation

Cornerstone Award-Public Projects, Finalist: Helzberg Penguin Plaza at the Kansas City Zoo

Federal Executive Board-Public Employees Recognition Day

Community Service Award: Brian Dennis, Supervisor of Recreation at Marlborough Community Center

Golfweek Magazine "Best You Can Play-Missouri Top 5"

#2-Shoal Creek Golf Course

#4- Swope Memorial Golf Course

Historic Kansas City Foundation

Preservation Merit Award-Community Catalyst: Penn Valley Park Drive & Lake Improvement and Liberty Memorial Landscape Restoration

Ingram's Magazine Best of Business Awards

Best Charitable Event-Gold: Jazzoo at the Kansas City Zoo

Best Theater- Silver: Starlight Theatre

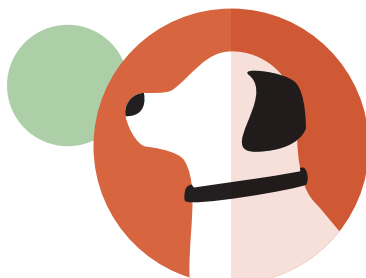
Best Family Outing/Venue-Silver: Kansas City Zoo

Best Museum-Silver: National World War I Museum at Liberty Memorial

Best Performing Arts Venue-Silver: Starlight Theatre

Kansas City Business Journal

Capstone Award, Community Impact: Helzberg Penguin Plaza at the Kansas City Zoo



Kansas City Convention and Visitors Association: Visitors' Choice Awards

Favorite Live Music Venue: Starlight Theatre

Favorite Performing Arts Group/Organization: Starlight Theatre

Favorite Kids Attraction: Kansas City Zoo

Favorite Museum: National World War I Museum at Liberty Memorial

Favorite Fountain: J.C. Nichols Memorial

Favorite Golf Course: Swope Memorial

Kansas City Golf Association

Hall of Fame: The Foursome from Swope Memorial Golf Course

Kansas City Rose Society

Honorary Lifetime Membership: Mark L. McHenry, Director

Missouri Department of Conservation

Missouri Community Forestry Council-Missouri Arbor Award of Excellence:
City of KCMO Forestry Division

State Champion Tree: Eastern Cottonwood in Kessler Park

Missouri Park and Recreation Association

Citation Award: City of Fountains Foundation

National Arbor Day Foundation

Tree City USA Award: City of Kansas City, Missouri

Tree City Growth Award: City of Kansas City, Missouri

Northland Neighborhoods Inc.

Jay Dillingham Lifetime Achievement Award: Mark L. McHenry, Director

Pitch Magazine Best of KC Awards

Best Place for Climbing: Cliff Drive

Best Golf Course-Second Place: Swope Memorial

Southtown Council-Southtown Foundation Beautification Awards

Crystal Award for Restoration Project: Waldo Tower

Peridot Award: Swope Park Soccer Village; 63rd Trafficway Curbs & Sidewalks, and Swope Park Signage

United States Tennis Association-Heart of America District

Community Service Award: Scott Hanover, Plaza Tennis Center

Distinguished Service: Elliott McDermed, KCUT co-owner

Event of the Year: Bracket of Death-Robert Madison, Plaza Tennis Center

Junior Tournament of the Year: Missouri Valley Futures, Plaza Tennis Center

United States Tennis Association- Missouri Valley Section

Community Service Award: Scott Hanover, Plaza Tennis Center

Junior Tournament of the Year: Missouri Valley Futures, Plaza Tennis Center

University of Missouri

Internship Coordinator Certificate of Appreciation: Forest Decker, Superintendent of Parks

Urban American Outdoors

Perspective Award: Mark Bowland, Assistant to the Director

World Team Tennis

Top 10 League Director: Scott Hanover, Plaza Tennis Center



EMPLOYEE RECOGNITION

EMPLOYEE SERVICE AWARDS

30 Years: City of Kansas City, MO

Bryan Edwards, Natural Resources-South Region
Dale Naset , Planning/Design Services-Park Facility Maintenance
Larry Robinson, Community Services-Community Centers
Barbara Scott, Planning/Design Services-Park Facility Maintenance



30 Years: Parks & Recreation

Susan Bray, Natural Resources-Lakeside Nature Center

35 Years: City of Kansas City, MO

Diana Tinnin, Administration-Human Resources

35 Years: Parks & Recreation

Tammie Tritico, Community Services
Robert Lawler, Planning/Design Services

40 Years: City of Kansas City, MO

Mark L. McHenry, Administration-Director

QUALITY CIRCLE AWARDS

Adrian Malone Supervisor of the Year

Bryan Edwards, South Region

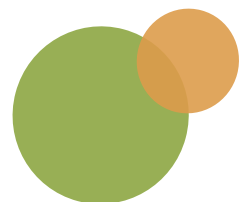
Employee of the Quarter

First Quarter: Gary Murray, Forestry Operations-Tree Service
Second Quarter: Jose Reyes, Forestry Operations – Tree Service
Third Quarter: Terrie Williams, Natural Resources Management- North Region Park Maintenance
Fourth Quarter: Sylvester Primers, Planning & Design Services - Facility Maintenance



KC Parks Outstanding Community Center

Kansas City North Community Center





CAPRA ACCREDITATION

In 2014, Kansas City Parks and Recreation continued its tenure as one of the elite park and recreation agencies in the country by earning reaccreditation through the Commission for Accreditation of Park and Recreation Agencies (CAPRA) and the National Recreation and Park Association (NRPA).

CAPRA accreditation is the only national accreditation for park and recreation agencies, and is a measure of an agency's overall quality of operation, management and service to the community. This mark of distinction indicates that an agency has met rigorous standards related to the management and administration of lands, facilities, resources, programs, safety and services.

As part of the accreditation process, KC Parks had to demonstrate compliance with 144 recognized standards and document all policies and procedures. The process for accreditation involved self-assessments, a formal application, a site visit by a team of trained visitors, and a hearing with the commission to grant accreditation. Once accredited, the agency must uphold the standards and is reviewed again in five years. KC Parks received its initial accreditation in 1999 and has continuously maintained its status as an accredited agency. There are currently 140 accredited park and recreation agencies in the United States.





SWOPE SOCCER VILLAGE

On September 12, dignitaries and Sporting Kansas City players and youth soccer players celebrated the official opening and dedication of Phase II construction at Swope Soccer Village.

Completed seven months early, Phase II improvements included the construction of five lighted synthetic turf fields, new fencing, upgraded restrooms and new concessions, landscaping, permanent press box for the Championship Field, 360 new parking spaces, and repaving of Loop & Lewis Roads with new curbs and gutters throughout the complex.

A main feature of Phase II was the installation of a new sculptural artwork, commissioned as part of the City's One Percent for Art program, by local artist Jake Balcom of Mettle Design. His creation Triple Blome is an interpretation of the geometric shape of the soccer ball -- the truncated icosahedron -- into three stunning sculptures set adjacent to the main gathering plaza.

This public/private partnership has transformed athletic fields into the state-of-the-art Swope Soccer Village, one of the nation's only true urban soccer complexes. Swope Soccer Village has quickly gathered a regional and national reputation for its beauty and world-class sports fields. In 2014, more than 50,000 visitors benefited from the investment with numbers projected to quadruple in 2015.

2014 Swope Soccer Village Highlights:

- 1,000+ youth attended free clinics with Sporting KC players and coaches
- 170 different leagues -- comprised of over 16,000 boys and girls -- played on the fields
- Training site for a distinguished list of teams including the U.S. Men's and Women's National Teams and English Premier League Champion Manchester City FC
- Hosted the NCAA Division III Men's and Women's Soccer Championships and well as the Big 12 Women's Soccer Championships

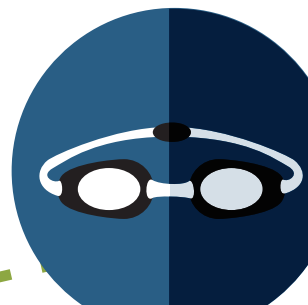
2014 PARTNERS IN PARKS

KC Parks has formal partnerships established with neighborhood, community, business and non-profit organizations. These partnerships allow our department to leverage resources and generate city-wide interest and support for our system facilities, programs and events.



Alexander Majors House
Arts Alive
ArtsTech
Bach Aria Soloists
Black Archives of Mid-America Inc.
The Bloch Foundation
Blue River Relief
Blue River Watershed Association
R.A. Bloch Cancer Foundation
Boys & Girls Clubs of Kansas City
Broadway/Westport Council
Brookside Business Association
Brookside Roller Hockey
Brookside Soccer Club
Burns & McDonnell
Center School District
Center Planning
Chaumiere Neighborhood Association
Children's Mercy Hospital
City of Fountains Foundation
City of North Kansas City Parks & Recreation
Clay County Parks and Recreation
Clay-Platte Baseball League
Cliff Drive Scenic Byway Corridor Management Committee
Crown Center District
Della C. Lamb
Developmental Disability Services of Jackson County-EITAS
Dogpark Improvement Group
Downtown Council
DST Realty/State Street Bank
Earth Riders Trail Association
Economic Development Corporation of Kansas City
Elmwood Cemetery
The Enshriners
Ethnic Enrichment Commission
First Tee of Greater KC
Friends of Bruce R. Watkins Cultural Heritage Center
Friends of Kansas City Museum at Corinthian Hall
Friends of Lakeside Nature Center
Friends of the Zoo
Full Employment Council

Gardeners Connect
Garrison Community Center Youth Advisory Board
The Giving Grove
City of Gladstone Parks and Recreation
Google
Gracemor Randolph Neighborhood Association
Grand Construction
GreenWorks of Kansas City
Guadalupe Center Inc.
HAVEN Bee Hives
Heartland Tree Alliance (Bridging the Gap)
Heart of America Council/Boy Scouts
Heart of America Shakespeare Festival
Hickman Mills School District
Historic Garment District Museum
Historical Society of New Santa Fe Trailside Center
Home Builders Association of Greater Kansas City
Hyde Park Neighborhood Association
Independence Avenue CID
Indian Mound Neighborhood Association
Jackson County Parks + Recreation
Jazz District Redevelopment Corp.
JE Dunn Construction Company
Just Off-Broadway Theater
KABOOOM!
Kansas City Chiefs
Kansas City Art Institute
Kansas City Community Gardens
Kansas City Cricket Club
Kansas City Design Center
Kansas City Flying Disc Club
Kansas City Metro Bicycle Club
Kansas City Metro Jr. Golf Club
Kansas City, Missouri Police Department
Kansas City, Missouri School District
Kansas City Northern Railroad
Kansas City Organics & Natural Market
Kansas City Rose Society
Kansas City Royals
Kansas City Rugby
Kansas City United Tennis
Kansas City WildLands





KC Crew
KC Hoops
KC United Tennis (KCUT)
William T. Kemper Foundation,
Commerce Bank Trustee
Kessler Society of Kansas City
Key Coalition
Liberty Memorial Association/World War I Museum
Literacy Kansas City
Lyric Opera
MainCor
Marlborough Neighborhood Association
Mattie Rhodes Center
Metropolitan Lutheran Ministries
Mid-America Regional Council
Mid-Continent Public Library
Mill Creek Park Association
Missouri Department of Conservation
Missouri Department of Natural Resources
Missouri Department of Transportation
Missouri Korean War Veterans Memorial Committee
Missouri Master Gardeners
Missouri Master Naturalists
Missouri Parks & Recreation Association
Monnett Battle of Westport Fund
National Center for Indigenous American
Cultures at Line Creek Inc.
National Park Service
National Recreation & Parks Association
Nelson-Atkins Museum of Art
North Bennington Neighborhood Association
North Kansas City Area Baseball Association
North Kansas City School District
North Suburban Youth Football League
Northeast Arts KC
Northern Knights
Northland Animal Welfare Society (NAWS)
Northland Neighborhoods Inc.
Northland Regional Chamber of Commerce
Northland Rugby Football Club
Nuestra Herencia
Park Hill School District
Pendleton Heights Neighborhood Association
Penn Valley Park Conservancy
Platte County Convention & Visitors Bureau
Platte County Parks and Recreation
Plaza Rotary Club
Police Athletic League (P.A.L.)
Port Authority of KCMO

Recreation Council of Greater Kansas City
Roanoke Park Conservancy
Ronald McDonald House Charities
Scarritt Renaissance Neighborhood Association
Shepherd's Center of KC Central
Shoal Creek Living History Museum Association
Silvertooth-Fahey home Womers Association
Sister City Association of KC
Skywalk Memorial Foundation
Society for Friendship with China
South Kansas City Alliance
South Suburban Junior Football League
Southeast Community Center Advisory Board
Southern Platte County Athletic Association dba
Northland Sports Alliance
Southtown Council
Sporting Club & Sporting Kansas City
Starlight Theatre Association
StoneLion Puppet Theatre
Theater League
3 & 2 Baseball
Three – Trails CID
Tony Aguirre Community Center Advisory Committee
University of Missouri, Kansas City
Union Cemetery Historical Society
Union Station Kansas City Inc.
Urban American Outdoors
Frank and Ann Uryasz
USA Swimming
US Army Corp of Engineers
US Fish & Wildlife Service
Verona Hills Homes Association
Vietnam Veterans of America Chapter 317
Vivion Road Gang
Unity Ridge home Owners Association
Waldo Area Business Association
Waldo Tower Historic Society
Ward Family Foundation
Visit KC
Water's Edge Aquatic Design
Wedgewood Pointe Property Owners Association
West Plaza Neighborhood Association
Westside CAN Center
Winnwood-Sunnybrook Neighborhood Association
Wornall Homestead Homes Association
Wonders of Wildlife
Zona Rosa





WORLD WAR I CENTENNIAL

The centennial of the Great War (2014-19) gives the nation the opportunity to learn and commemorate. Throughout the Centennial Commemoration, the National World War I Museum will serve as a national resource and leader in the study, interpretation and remembrance of World War I.

During the first year of the Centennial, the National World War I Museum set an attendance record and hosted visitors from nearly 80 countries across the world in addition to offering a host of internationally themed programs and exhibitions, including its annual symposium and an event on June 28 commemorating the assassination of the Archduke Franz Ferdinand featuring an address from former U.S. Ambassador to Bosnia-Herzegovina Dr. John Menzies.

The Museum curated four special exhibitions in 2014. *Over By Christmas: August-December 1914* examined the romantic notions of war against the backdrop of the devastation caused in the opening months of the Great War. *On the Brink: A Month That Changed the World* reviewed the underground organizations, diplomatic communications and international newspaper reporting of the assassination of Archduke Franz Ferdinand and its political aftershock. The Museum curated two online exhibitions: *War Fare: From the Homefront to the Frontlines*, which included photographs, comments and even delicious vintage recipes updated for the modern era, and *The Christmas Truce, Winter 1914*, which explored the events surrounding The Christmas Truce.

The National World War I Museum also presented two international special exhibitions. *War & Art*, curated by the Instituto Per La Storia Del Risoorgimento Italiana, Roma, showcased photographs of Italian soldiers to preserve precious works of art during the war through a series of photographs never before exhibited outside of Italy. *Letters & Artworks From War – Renefer: 1914-18* highlighted works from the French artist Renefer during his time on the frontlines in a bilingual exhibition.



BAYRIDER

When the BayRider opened at The Bay Water Park on Memorial Day weekend, Kansas City became the second city in Missouri to have a surfing simulator in a municipal water park and the first in Kansas City, Missouri. The BayRider generates a thin sheet of water that flows at speeds ranging from 20-30 mph over a stationary wave form. The resulting "wave-like" shape permits riders to slide down, carve a turn, and ride the wave surface, emulating the maneuvers of board sports. The attraction, made popular on cruise ships, is 22' wide and 54' long with a tank volume of 39,000 gallons. Throughout the summer of 2014, riders were able to catch a wave in Kansas City more than 10,000 times!

The BayRider addition is the latest in a long line of improvements to the Longview site since KC Parks acquired the former YMCA property in 2002. Previous enhancements include a large spray ground, parking lot, play area, football fields, concession building, storage building and, of course, The Bay Water Park.



WAGGIN' TRAIL DOG PARK

KC Parks answered the growing demand for more off-leash dog areas with the opening of a third dog park in August. Completed in partnership with the City of North Kansas City, Waggin' Trail Park, is divided into a 1-acre small dog and 2.5-acre large dog area. The park amenities include asphalt walking trails, an agility course, benches, water fountains, three tunnel runs and a parking lot. Additional benches and a shelter will be added in 2015.



Kansas City Museum at Corinthian Hall.



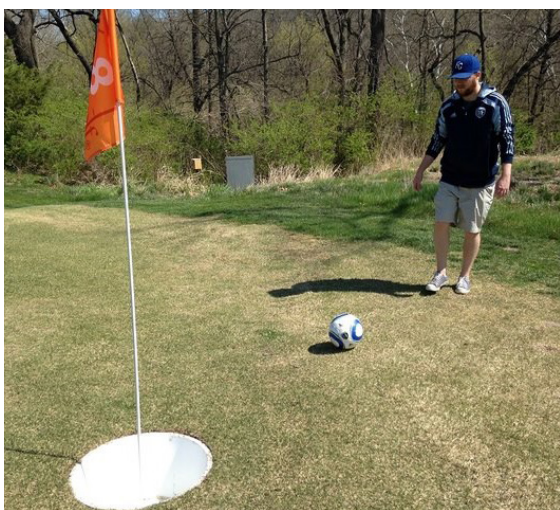
KANSAS CITY MUSEUM AT CORINTHIAN HALL

In May, KC Parks assumed the management, programs and operations of the Kansas City Museum at Corinthian Hall in historic Northeast Kansas City.

The Kansas City Museum is Kansas City's first museum of local and regional history and boasts a collection of more than 70,000 items. The museum is housed in the former urban estate of lumber baron and civic leader Robert A. Long. The 3-acre plot is located atop a bluff overlooking the Missouri River Valley, adjacent to Kessler Park and Cliff Drive.

The site features five of the six original structures. These include Corinthian Hall, the 70-room four-story Beaux Arts limestone residence; the Carriage House; the StoryTarium in the former Conservatory; the Gatehouse; the Museum's administrative offices' and the Carpenter's shed. The property also includes the Museum's Visitor Center and reconstructed Historic Gardens.

Corinthian Hall has been under significant renovation over the last five years with the City investing approximately \$10 million into the facility. The Parks department, under the leadership of the Museum's Executive Director Anna Marie Tutera, continues to manage the renovation process and is developing a vision for the future and best use of the facility and surrounding campus.



Kansas City, Missouri Parks and Recreation

4600 East 63rd Street
Kansas City, Missouri 64130

816-513-7500 | kcparks.org

